

**RUSH
WITT &
WILSON**



**84 Dorset Road, Bexhill-On-Sea, East Sussex TN40 1SQ
Guide Price £362,500**

A beautifully presented three bedroom, semi-detached house, built circa 1935, comes with a wealth of charm and character throughout. The property comprises dual aspect living/dining room, modern fitted kitchen, separate utility room, three double bedrooms and family bathroom. Other internal benefits include gas central heating to radiators and double glazed windows and doors throughout. Externally the property boasts private front and rear gardens. Viewing comes highly recommended by RWW sole agents. Council Tax Band C.



Entrance Hallway

Stairs leading to the first floor, double glazed windows to the front elevation, radiator.

Living Room

13'11" x 13'1" (4.26 x 4.00)

Double glazed bay window to the front elevation, double radiator, feature fireplace with brick surround and mantle. Opening into the dining room.

Dining Room

14'11" x 11'5" (4.57 x 3.50)

Double glazed glass panelled doors giving access onto the rear garden, double radiator. Opening into the living room.

Kitchen

8'11" x 8'3" (2.74 x 2.53)

Modern fitted kitchen with a range of matching base and wall level units with wooden straight edge worktop surfaces, butler sink with drainer and hot and cold tap, space for freestanding cooker with extractor canopy above, tiled splashbacks, double glazed windows to the rear elevation, recessed ceiling spotlights.

Utility Room

Base level units with wooden straight edge worktops, space and plumbing for washing machine, space and plumbing for tumble dryer, gas central heating and domestic hot water boiler, stable door giving access onto the front , obscured glass panelled door giving access onto the rear garden.

First Floor Landing

Double glazed windows to the side elevation.

Bedroom One

14'1" x 10'7" (4.30 x 3.25)

Double glazed bay windows to the front elevation, radiator, built in wardrobe cupboards with mirrored sliding doors with hanging space and shelving.

Bedroom Two

12'10" x 10'5" (3.93 x 3.19)

Double glazed windows to the rear elevation, radiator.

Bedroom Three

8'6" x 8'0" (2.61 x 2.46)

Double glazed windows to the front elevation, radiator.

Bathroom

Modern suite comprising wc with low level flush, pedestal mounted wash hand basin with hot and cold tap, freestanding claw foot bath with chrome controls and additional chrome hand/shower attachment, roll top radiator, obscured double glazed windows to the rear elevation, part tiled walls.

Outside**Front Garden**

Private front garden with path leading to the front entrance, mainly laid to lawn, well established with plants and shrubs of various kinds.

Rear Garden

Mainly laid to lawn, well established with plants, shrubs and trees of various kinds, patio area suitable for alfresco dining, enclosed to all side, timber framed shed.

Agents Note

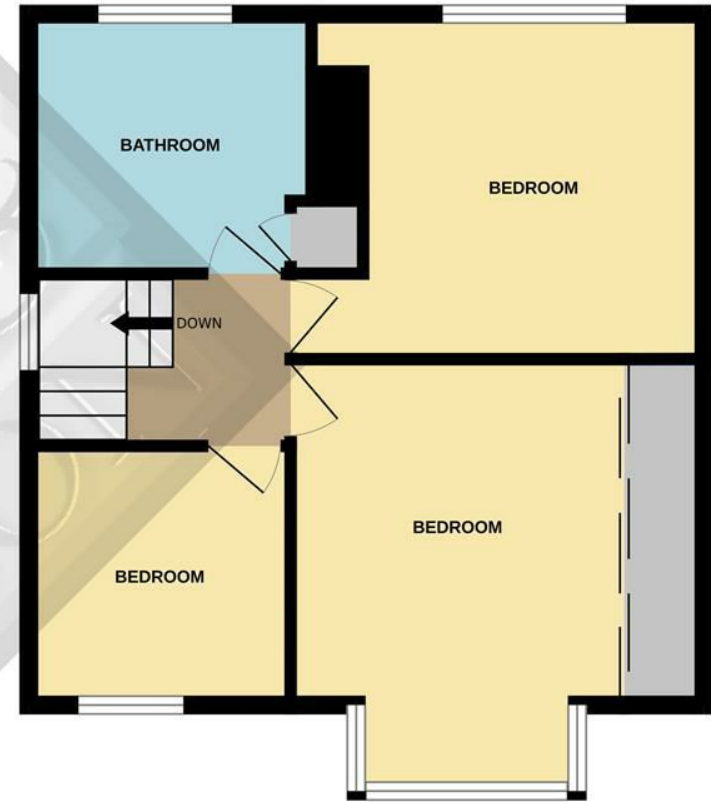
None of the services or appliances mentioned in these sale particulars have been tested. It should also be noted that measurements quoted are given for guidance only and are approximate and should not be relied upon for any other purpose.



GROUND FLOOR
539 sq.ft. (50.1 sq.m.) approx.



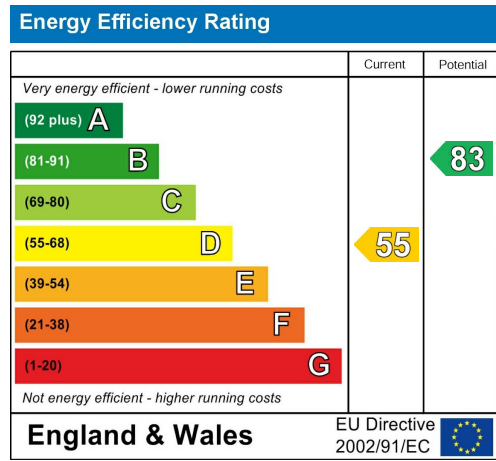
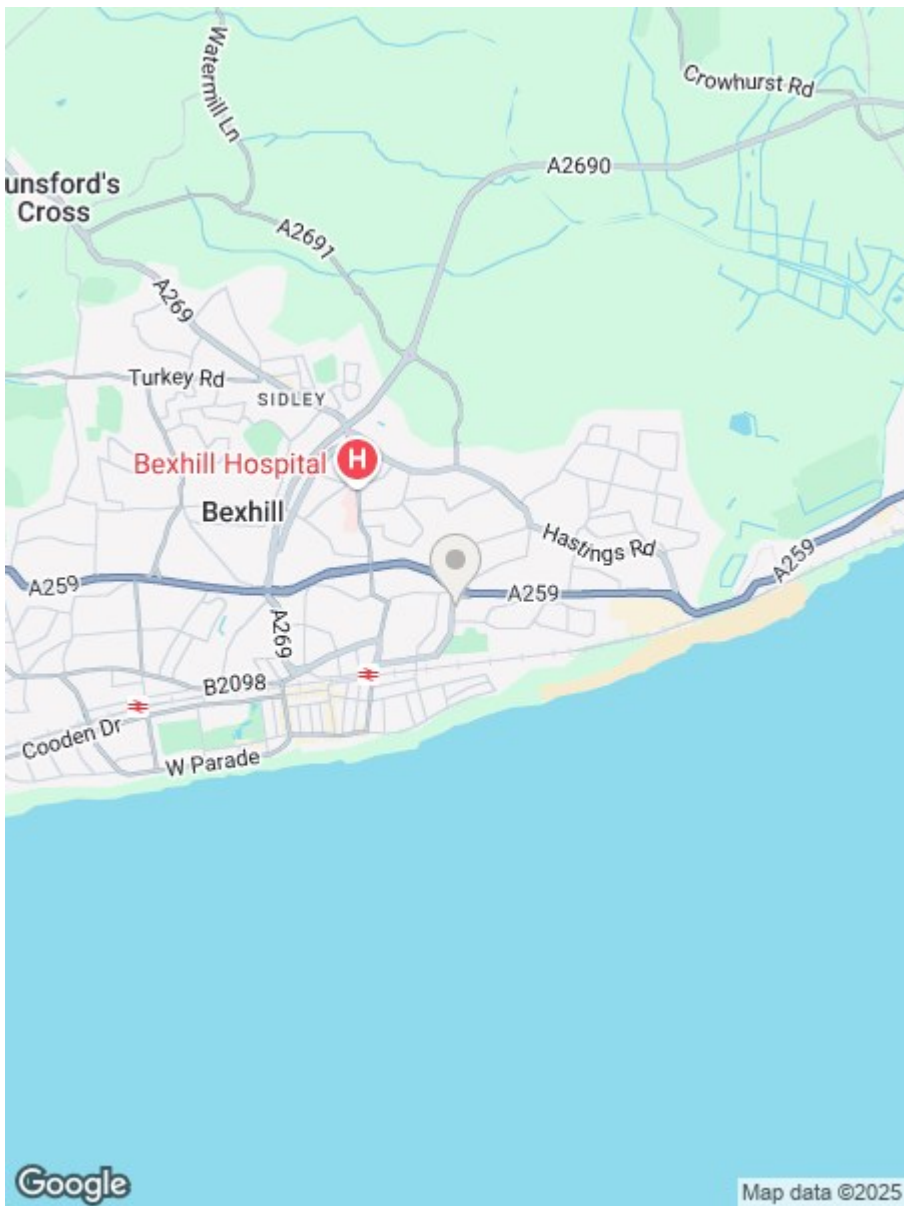
1ST FLOOR
471 sq.ft. (43.8 sq.m.) approx.



TOTAL FLOOR AREA : 1010 sq.ft. (93.9 sq.m.) approx.

Whilst every attempt has been made to ensure the accuracy of the floorplan contained here, measurements of doors, windows, rooms and any other items are approximate and no responsibility is taken for any error, omission or mis-statement. This plan is for illustrative purposes only and should be used as such by any prospective purchaser. The services, systems and appliances shown have not been tested and no guarantee as to their operability or efficiency can be given.

Made with Metropix ©2024



**RUSH
WITT &
WILSON**

**Residential Estate Agents
Lettings & Property Management**



**3 Devonshire Road
Bexhill-on-Sea
East Sussex
TN40 1AH
Tel: 01424 225588
bexhill@rushwittwilson.co.uk
www.rushwittwilson.co.uk**